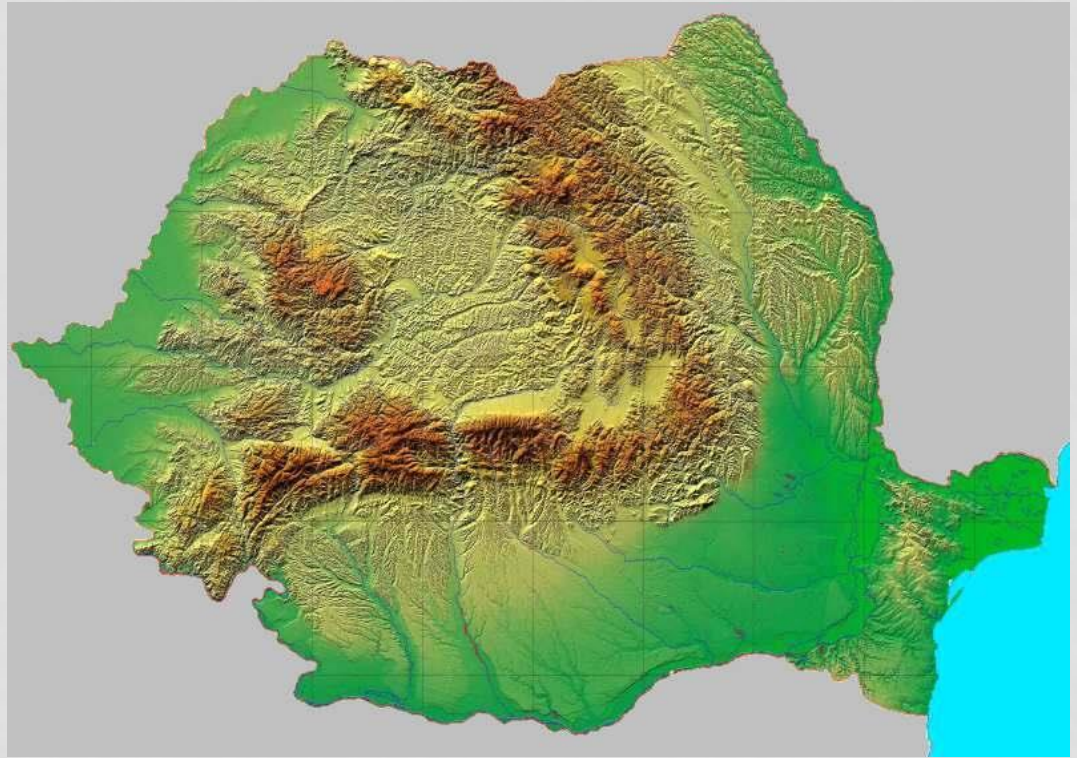


ROMANIA



GEOGRAPHY

- Romania is a country located in the south-east of Central Europe. Almost the entire surface of the Danube Delta and the southern and central part of the Carpathian Mountains are located on its territory. The capital of Romania is Bucharest.



OUR FLAG

The blue signifies truth and loyalty, yellow means generosity and red signifies bravery and strenght.
National Romania Flag Day is June 26.



REGIONS

- Maramures
- Moldova
- Bucovina
- Transylvania
- Dobrogea
- Crisana
- Banat
- Muntenia
- Oltenia



CAPITAL: BUCHAREST

- The largest city in the country. Industrial, cultural and financial center of Romania.
- Over 2.4 million people



THE BLACK SEA

- Has an area of 423.000 km²
- Maximum depth is 2,210 m
- Most important river that flows into the Black Sea is the Danube River



PELES CASTLE

- Located in the western Bucegi mountains.
- Built by King Carol I
- Has many historical artifacts



BRAN CASTLE



EASTER TRADITIONS

- Celebrating Easter is one of the most beautiful Romanian traditions. For this celebration eggs are dyed red, lamb dishes are cooked traditionally. Dyeing and beating red eggs is the most widespread Easter custom. The legends also say that red eggs from Easter protect us from diseases, purify us and give us beauty.



CHRISTMAS TRADITIONS

- At Christmas, another custom known to everyone is caroling. The caroling begins on December 24 and can continue for 2 or 3 days; caroling is usually done in groups, by children, mature people, old people, only girls, only boys, newlyweds, depending on the area.

